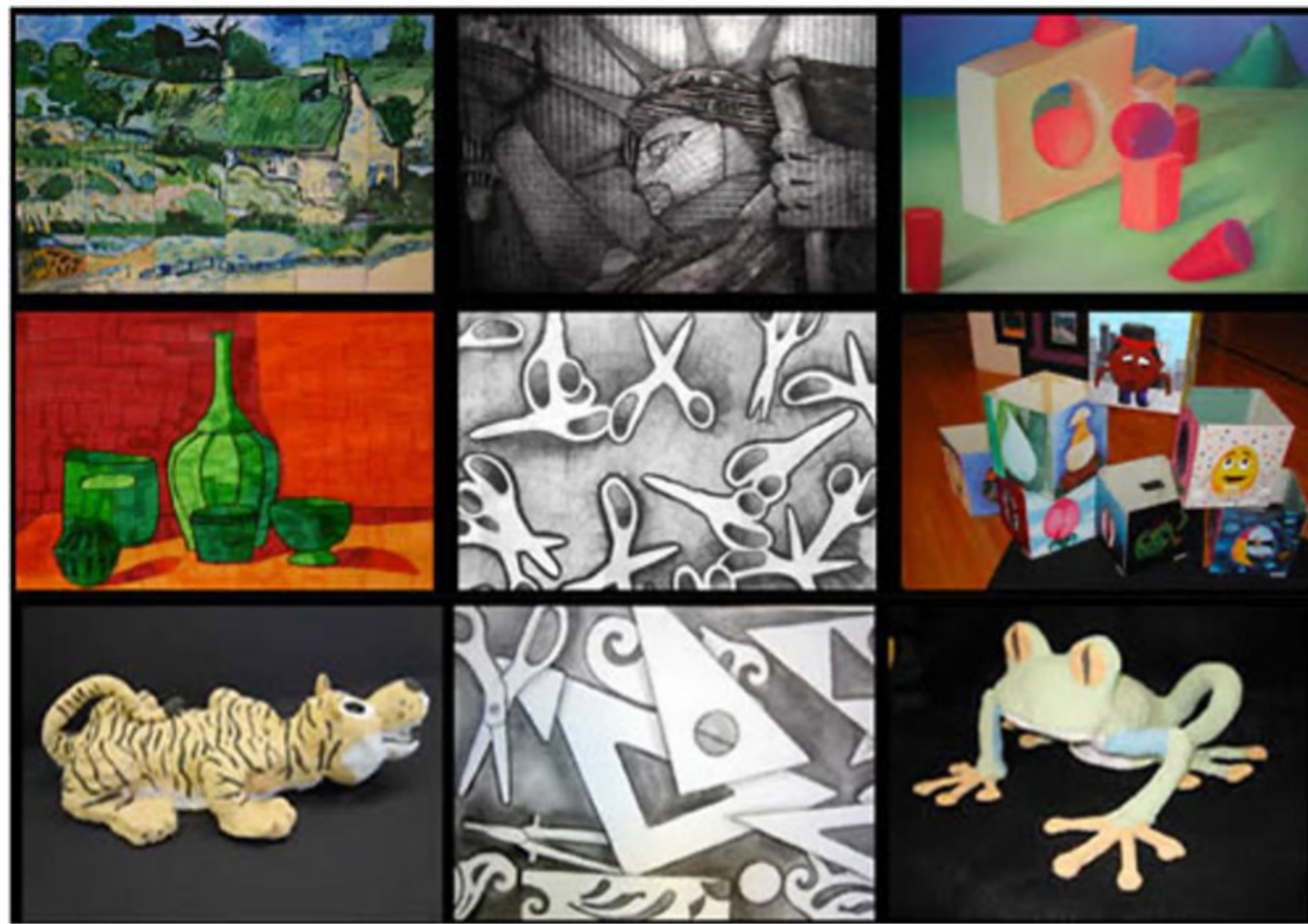


The background is an abstract watercolor composition. It features large, soft-edged washes of color: a warm yellow-orange on the left, a muted olive green at the top, a pale pink at the bottom left, and a sage green on the right. Overlaid on these is a large, irregular white shape with a torn, deckled edge, resembling a piece of paper pasted onto the artwork. The text 'STUDIO ART' is printed in a bold, black, sans-serif font across the center of this white shape. There are also small, dark brown circular spots scattered across the yellow and green areas, suggesting ink splatters or texture.

STUDIO ART







The background is an abstract watercolor composition. It features large, soft-edged washes of color: a warm yellow-orange on the left, a muted green on the right, and a pale pink at the bottom. Overlaid on these is a white, torn-edge paper shape that serves as a container for the text. The text is in a bold, black, hand-drawn style font. There are also small, dark brown ink-like spots scattered across the watercolor background.

EXPERIENCING VISUAL ART



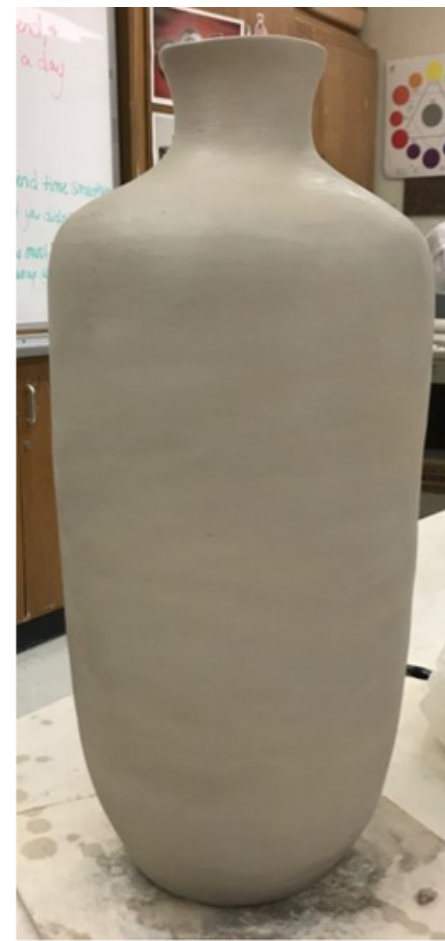
The background is an abstract watercolor composition. It features large, soft-edged washes of color: a warm yellow-orange on the left, a muted olive green on the right, and a pale pinkish-beige at the bottom. Overlaid on these is a white, torn-edge paper shape that serves as a backdrop for the text. The text is in a bold, black, sans-serif font. There are also small, dark brown circular spots scattered across the watercolor background, resembling ink splatters or dust.

DIGITAL PHOTOGRAPHY



The background is an abstract watercolor composition. It features large, overlapping washes of color: a warm yellow-orange on the left, a muted olive green at the top, a soft pink at the bottom left, and a sage green on the right. A central, irregular white shape with deckled edges, resembling a piece of torn paper, serves as a platform for the text. Scattered throughout the watercolor areas are small, dark brown circular spots, giving the impression of ink splatters or natural pigments.

POTTERY



The background is an abstract watercolor composition. It features large, soft-edged washes of color in shades of mustard yellow, olive green, and dusty rose. Overlaid on these washes is a white, torn-edge paper shape that serves as a container for the text. The text is rendered in a bold, black, hand-drawn style font. The overall aesthetic is artistic and organic.

MULTICULTURAL ART AND DESIGN



The image features a watercolor-style background with soft, blended colors of yellow, green, and pink. A central, irregular white shape with a torn, deckled edge serves as a focal point. The word "JEWELRY" is printed in a bold, black, sans-serif font across the middle of this white shape. The overall aesthetic is artistic and hand-drawn.

JEWELRY



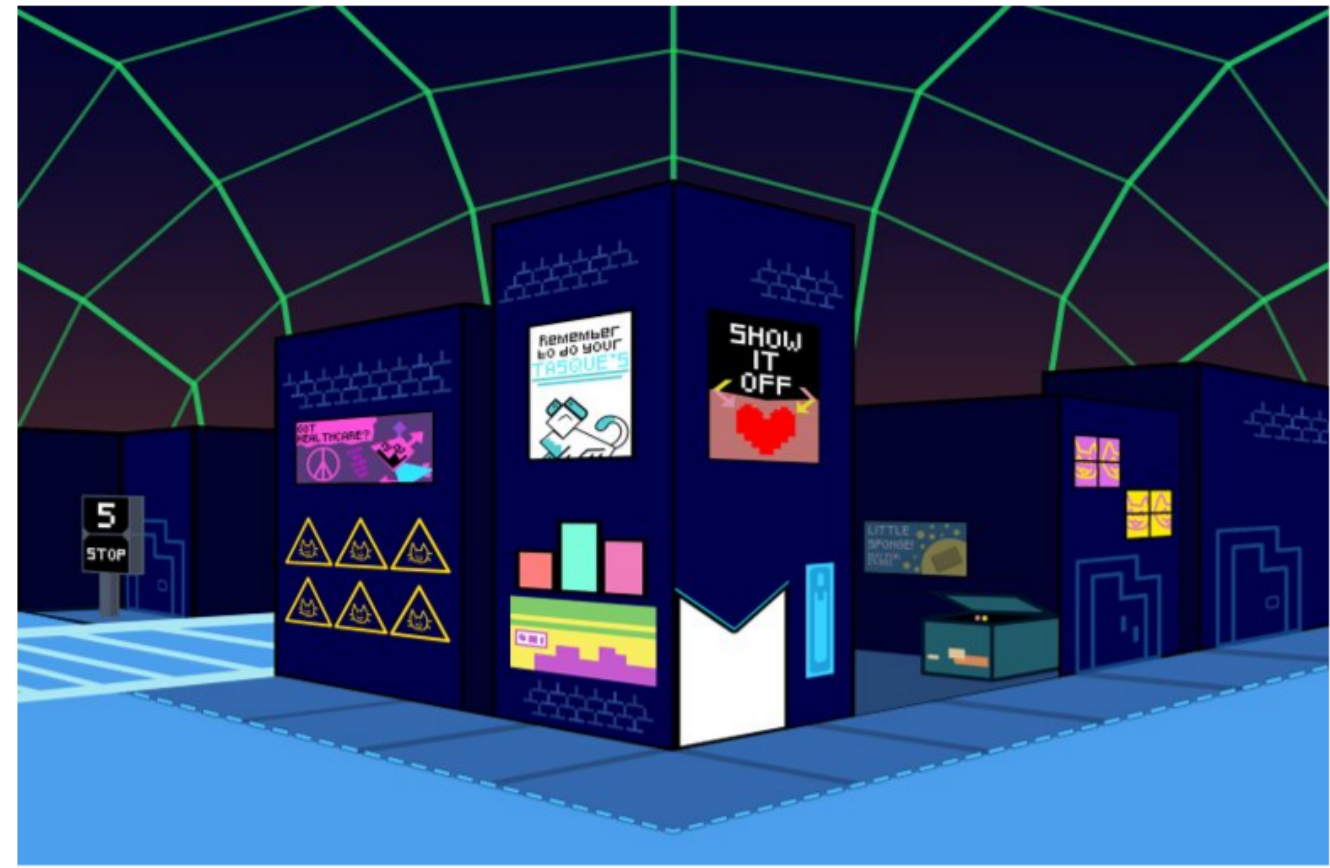
The image features a vibrant watercolor background with a torn paper effect. The background is composed of several overlapping washes of color: a warm yellow-orange on the left, a soft pink at the bottom left, a pale green on the right, and a muted olive green at the top. The edges of these color areas are irregular and feathered, giving it a hand-painted feel. In the center, a white, torn-edge rectangular shape serves as a backdrop for the word "ANIMATION". The word is written in a bold, black, sans-serif font, with all letters in uppercase. The overall aesthetic is artistic and creative, typical of a title card for an animation project.

ANIMATION



The background is an abstract watercolor illustration. It features large, soft-edged washes of color in shades of mustard yellow, olive green, and dusty rose. Overlaid on these washes is a white, torn-edge paper shape that serves as a backdrop for the text. The text is in a bold, black, hand-drawn style font. There are also some small, dark brown ink-like spots scattered across the yellow and green areas.

DIGITAL ILLUSTRATION



AP ART HISTORY

